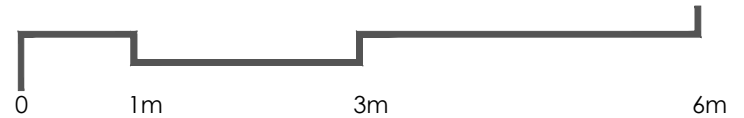
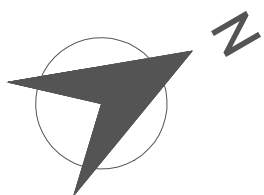
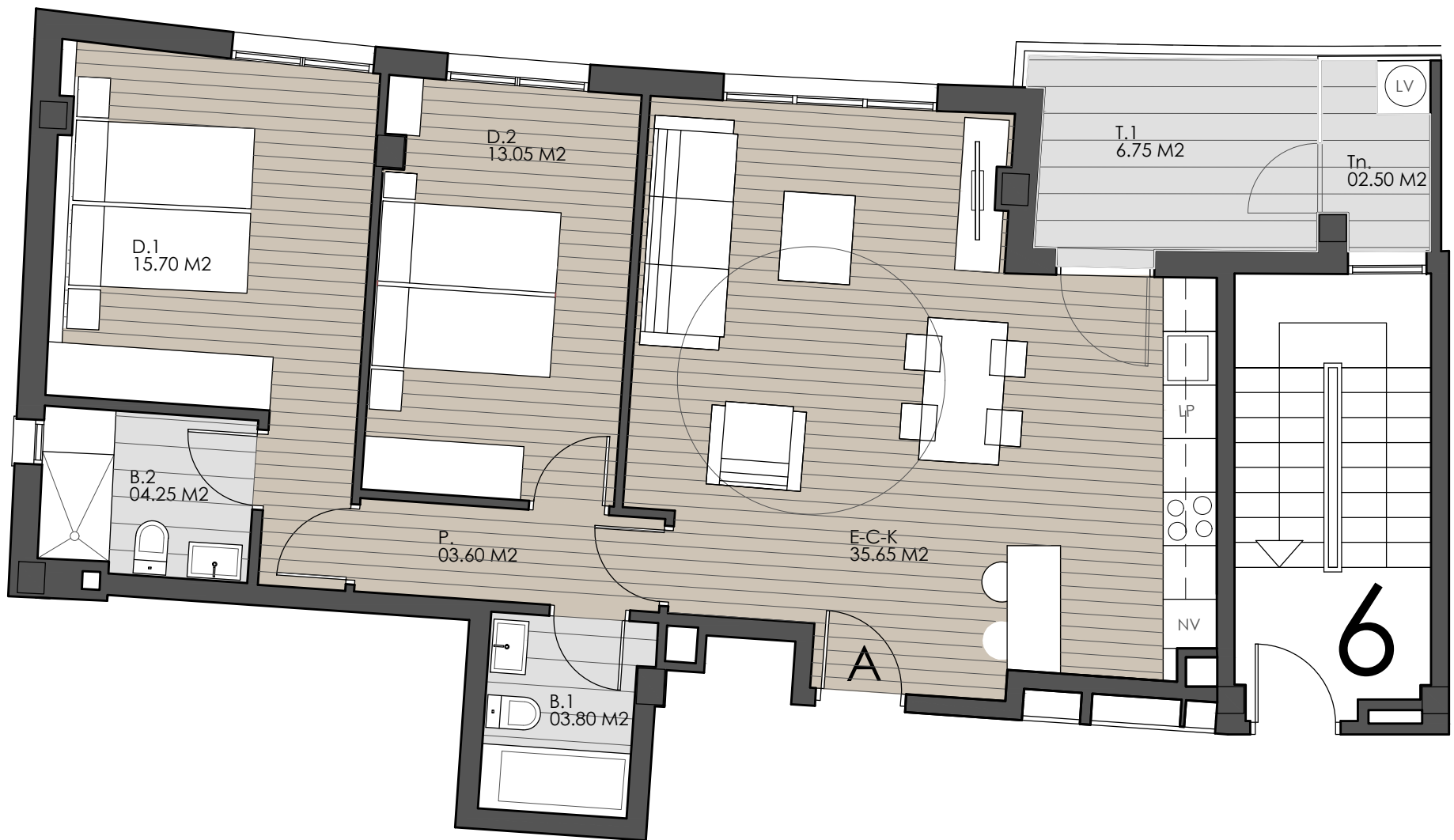


PORTAL 6 - VIVIENDA 3A



VIVIENDA A

Estar-Comedor-Cocina	35,65 m ²
Distribuidor	03,60 m ²
Dormitorio 1	15,70 m ²
Dormitorio 2	13,05 m ²
Baño 1	03,80 m ²
Baño 2	04,25 m ²
SUP. ÚTIL INTERIOR	76,05 m²
Terraza 1	06,75/2 m ²
Tendedero	02,50/2 m ²
SUP. ÚTIL TOTAL	80,68 m²